

# Generalized Potts-Models and their Relevance for Gauge Theories

A. Wipf, T. Kaestner and C. Wozar

Theoretisch-Physikalisches-Institut

Friedrich-Schiller-Universität Jena, Max Wien Platz 1

07743 Jena

T. Heinzl

School of Mathematics and Statistics, University of Plymouth

Drake Circus, Plymouth, PL4 8AA, United Kingdom

## Abstract

We study the Polyakov loop dynamics originating from finite-temperature Yang-Mills theory. The effective actions contain center-symmetric terms involving powers of the Polyakov loop, each with its own coupling. For a subclass with two couplings we perform a detailed analysis of the statistical mechanics involved. To this end we employ a modified mean field approximation and Monte Carlo simulations based on a novel cluster algorithm. We find excellent agreement of both approaches. The phase diagram exhibits both first and second order transitions between symmetric, ferromagnetic and anti-ferromagnetic phases with phase boundaries merging at three tricritical points. The critical exponents  $\nu$  and  $\gamma$  at the continuous transition between symmetric and anti-ferromagnetic phases are the same as for the 3-state spin Potts model. Keywords: Gauge theories, Potts models, Polyakov loop dynamics, mean field approximation, Monte-Carlo simulations

## 1 Introduction

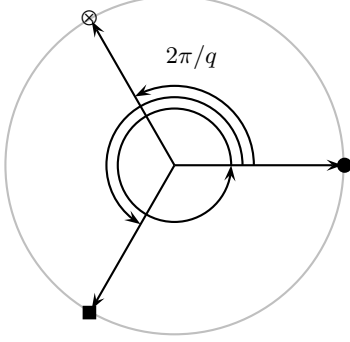
Symmetry constraints and strong coupling expansion for the effective action describing the Polyakov loop dynamics of gauge theories lead to effective field theories with rich phase structures. The fields are the fundamental characters of the gauge group with the fundamental domain as target space. The center symmetry of pure gauge theory remains a symmetry of the effective models. If one further freezes the Polyakov loop to the center  $\mathcal{Z}$  of the gauge group one obtains the well known vector Potts spin-models, sometimes called clock models. Hence we call the effective theories for the Polyakov loop dynamics *generalized  $\mathcal{Z}$ -Potts models*. We review our recent results on generalized  $\mathbb{Z}_3$ -Potts models [1]. These results were obtained with the help of an improved mean field approximation and Monte-Carlo simulations. The mean field approximation turns out to be much better as expected. Probably this is due to the existence of tricritical points in the effective theories. There exist four distinct phases and transitions of first and second order. The critical exponents  $\nu$  and  $\gamma$  at the second order transition from the symmetric to anti-ferromagnetic phase for the generalized Potts model are the same as for the corresponding Potts spin model.

Earlier on it had been conjectured that the effective Polyakov loop dynamics for finite temperature  $SU(N)$  gauge theories near the phase transition point is very well modelled by 3-dimensional  $\mathbb{Z}_N$  spin systems [2]. For  $SU(2)$  this conjecture is supported by universality arguments and numerical simulations. The status of the conjecture for  $SU(3)$  gauge theories is unclear, since the phase transition is first order such that universality arguments apparently are not applicable.

## 2 Recall of Potts Models

The  $q$ -state Potts model [3] is a natural extension of the Ising model. On every lattice site  $x$  there is a planar vector with unit length which may point in  $q$  different directions with angles

$$\theta_x \in \left\{ \frac{2\pi}{q}, \frac{4\pi}{q}, \dots, 2\pi \right\} = \mathbb{Z}_q.$$

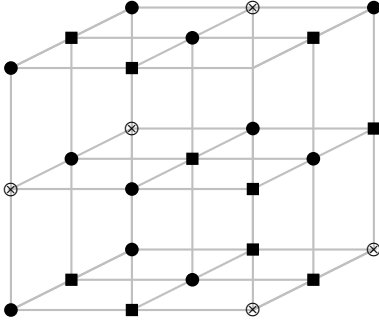


Only nearest neighbors interact and their contribution to the energy is proportional to the scalar product of the vectors, such that

$$H = -J \sum_{\langle xy \rangle} \cos(\theta_x - \theta_y). \quad (1)$$

The Hamiltonian  $H$  is invariant under simultaneous rotations of all vectors by a multiple of  $2\pi/q$ . These  $\mathbb{Z}_q$  symmetries map a configuration  $w = \{\theta_x | x \in \Lambda\}$  into  $w' = \{\theta_x + 2\pi n/q\}$ ,  $n \in \{1, \dots, q\}$ .

In two and higher dimensions the spin model shows a phase transition at a critical coupling  $K_c = \beta J_c > 0$  from the symmetric to the ferromagnetic phase. In two dimensions this transition is second order for  $q \leq 4$  and first order for  $q > 4$ . In three dimensions it is second order for  $q \leq 2$  and first order for  $q > 2$ .



There is another phase transition at negative critical coupling  $K'_c$  from the symmetric to the anti-ferromagnetic phase. For  $q \geq 3$  and negative  $K$  the number of ground states of (1) increases rapidly with the number of lattice sites. It equals the number of ways one can color the vertices with  $q$  colors such that two neighboring sites have different colors. In the anti-ferromagnetic case the degenerate ground states contribute considerably to the *entropy* [4]

$$S_B(p) = - \sum P(w) \log P(w), \quad (2)$$

where one sums over all spin configurations and  $P$  is the probability of  $w$ . We use the well known variational characterization of the *free energy*,

$$\beta F = \inf_P (\beta \langle H \rangle_P - S_B), \quad \langle H \rangle_P = \sum_w P(w) H(w), \quad (3)$$

where the minimum is to be taken on the space of all probability measures. The unique minimizing probability measure is the Gibbs state

$$P_{\text{Gibbs}} \sim e^{-\beta H} \quad (4)$$

belonging to the canonical ensemble. In the variational definition of the *convex effective action* one minimizes on the convex subspace of probability measures with fixed mean field,

$$\Gamma[m] = \inf_P (\beta \langle H \rangle_P - S(P) | \langle e^{i\theta_x} \rangle_P = m(x)). \quad (5)$$

The field  $m(x)$  which minimizes the effective action is by construction the expectation value of the field  $e^{i\theta_x}$  in the thermodynamic equilibrium state (4).

In the mean field approximation to the effective action one further assumes that the measure is a product measure [5],

$$P(w) = P(\{\theta_x\}) = \prod_x p_x(\theta_x), \quad (6)$$

where the single site probabilities are maps  $p_x : \mathbb{Z}_q \rightarrow [0, 1]$ . The approximate effective action is denoted by  $\Gamma_{\text{mf}}[m]$ .

The symmetric and ferromagnetic phases are both translationally invariant. In the mean field approximation all single site probabilities are the same,  $p_x = p$ , and the mean field is constant,  $m(x) = m$ . The *effective potential* is the effective action for constant mean field, divided by the number of sites. Its mean field approximation is

$$u_{\text{mf}}(m) = \inf_p \left( -Kmm^* + \sum_{\theta} p(\theta) \log p(\theta) \middle| \sum_{\theta} p(\theta) e^{i\theta} = m \right), \quad K = dJ. \quad (7)$$

It agrees with the mean field approximation to the constraint effective potential, introduced by O’Raifeartaigh et.al [6, 7]. In the antiferromagnetic phase there is no translational invariance on the whole lattice  $\Lambda$  but on each of two sublattices in the decomposition  $\Lambda = \Lambda_1 \cup \Lambda_2$ . The sublattices are such that two nearest neighbors always belong to different sublattices. Thus the single site distributions  $p_x$  in (6) are not equal on the whole lattice, but only on the sublattices,

$$p_x = p_1 \text{ on } \Lambda_1 \quad \text{and} \quad p_x = p_2 \text{ on } \Lambda_2. \quad (8)$$

The minimization of the effective action on such product states is subject to the constraints

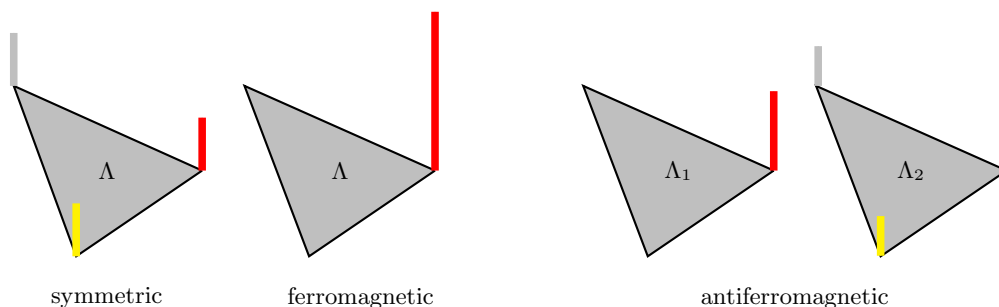
$$\sum_{\theta \in \mathbb{Z}_q} p_1(\theta) e^{i\theta} = m_1 \quad \text{and} \quad \sum_{\theta \in \mathbb{Z}_q} p_2(\theta) e^{i\theta} = m_2 \quad (9)$$

and yields the following mean field effective potential

$$u_{\text{mf}}(m_1, m_2) = \frac{1}{2} \left( K|m_1 - m_2|^2 + \sum_i u_{\text{mf}}(m_i) \right), \quad (10)$$

where  $u_{\text{mf}}$  is the effective potential (7). For  $K > 0$  the minimum is attained for  $m_1 = m_2$  and translational invariance is restored. In the symmetric and ferromagnetic phases the single site probabilities  $p_1 = p_2 = p$ . In the symmetric phase  $p = 1/q$  for every orientation and in the ferromagnetic phase  $p$  is peaked at one orientation. Hence there exist  $q$  different ferromagnetic equilibrium states related by  $\mathbb{Z}_q$  symmetry transformations. In the antiferromagnetic phase the probabilities  $p_1$  and  $p_2$  are different.

For the 3-state Potts model one can calculate the single site probabilities explicitly. On one sublattice it is peaked at one orientation and on the other sublattice it is equally distributed over the remaining 2 orientations.



Hence there are 6 different antiferromagnetic equilibrium states related by  $\mathbb{Z}_3$  symmetries and an exchange of the sublattices. The results for single site distributions of the 3-state Potts model are depicted in the figure above.

### 3 Polyakov-Loop Dynamics

We consider pure Euclidean gauge theories with group valued link variables  $U_{x;\mu}$  on a lattice with  $N_t$  sites in the temporal direction. The fields are periodic in this direction,  $U_{t+N_t;\mathbf{x};\mu} = U_{t;\mathbf{x};\mu}$ . We are

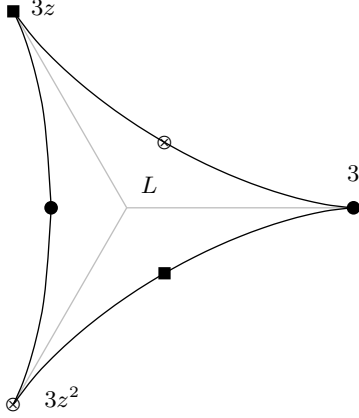
interested in the distribution and expectation values of the traced Polyakov loop variable

$$L_{\mathfrak{z}} = \text{tr } \mathcal{P}_{\mathfrak{z}}, \quad \mathcal{P}_{\mathfrak{z}} = \prod_{t=1}^{N_t} U_{t,\mathfrak{z};0}, \quad (11)$$

since  $\langle L_{\mathfrak{z}} \rangle$  is an order parameter for finite temperature gluodynamics (see [8] for a review). In the low-temperature confined phase  $\langle L_{\mathfrak{z}} \rangle = 0$  and in the high-temperature deconfined phase  $\langle L_{\mathfrak{z}} \rangle \neq 0$ . The effective action for the Polyakov loop dynamics is

$$e^{-S_{\text{eff}}[\mathcal{P}]} = \int \mathcal{D}U \delta \left( \mathcal{P}_{\mathfrak{z}}, \prod_{t=1}^{N_t} U_{t,\mathfrak{z};0} \right) e^{-S_w[U]}, \quad \mathcal{D}U = \prod_{\text{links}} d\mu_{\text{Haar}}(U_x; \mu), \quad (12)$$

with gauge field action  $S_w$ . In this formula the group valued field  $\mathcal{P}_{\mathfrak{z}}$  is prescribed and the delta-distribution enforces the constraints (11). In the simulations we used the Wilson action for the gauge fields. Gauge invariance of the action  $S_w[U]$  and measure  $\mathcal{D}U$  implies  $S_{\text{eff}}[\mathcal{P}] = S_{\text{eff}}[L]$ . In addition there is the global center symmetry, under which all  $\mathcal{P}_{\mathfrak{z}}$  are multiplied by the same



center element of the group. For  $SU(N)$  the center consists of the  $N$  roots of unity, multiplied by the identity matrix. Hence for  $SU(N)$  theories we have

$$S_{\text{eff}}[L] = S_{\text{eff}}[z \cdot L], \quad z^N = 1. \quad (13)$$

In the figure on the left we plotted the domain of the traced Polyakov loop variable for  $SU(3)$ . The values of  $L$  at the three center elements are  $3, 3z$  and  $3z^2$  with  $z = e^{2\pi i/3}$ . They form the edges of the triangle. What is needed is a good ansatz for the effective action  $S_{\text{eff}}$  in (12).

To this aim we calculated the leading terms in the strong coupling expansion for  $S_{\text{eff}}$  in gluodynamics [1, 9]. As expected one finds a character expansion with nearest neighbor interactions,

$$S_{\text{eff}} = \lambda_{10} S_{10} + \lambda_{20} S_{20} + \lambda_{11} S_{11} + \lambda_{21} S_{21} + \rho_1 V_1 + O(\beta^{3N_t}), \quad (14)$$

where  $S_{pq}$  depends on the character  $\chi_{pq}$  belonging to the representation  $(p, q)$  of  $SU(3)$ . Expressing the characters as function of the fundamental characters  $\chi_{10} = L$  and  $\chi_{01} = L^*$  the different center-symmetric contributions have the form

$$\begin{aligned} S_{10} &= \sum_{\langle \mathfrak{xy} \rangle} (L_{\mathfrak{x}} L_{\mathfrak{y}}^* + \text{h.c.}) , \\ S_{20} &= \sum_{\langle \mathfrak{xy} \rangle} (L_{\mathfrak{x}}^2 L_{\mathfrak{y}}^{*2} - L_{\mathfrak{x}}^2 L_{\mathfrak{y}} - L_{\mathfrak{x}}^* L_{\mathfrak{y}}^{*2} + L_{\mathfrak{x}}^* L_{\mathfrak{y}} + \text{h.c.}) , \\ S_{11} &= \sum_{\langle \mathfrak{xy} \rangle} (|L_{\mathfrak{x}}|^2 |L_{\mathfrak{y}}|^2 - |L_{\mathfrak{x}}|^2 - |L_{\mathfrak{y}}|^2 + 1) , \\ S_{21} &= \sum_{\langle \mathfrak{xy} \rangle} (L_{\mathfrak{x}}^2 L_{\mathfrak{y}} - L_{\mathfrak{x}}^* L_{\mathfrak{y}} + L_{\mathfrak{y}}^2 L_{\mathfrak{x}} - L_{\mathfrak{x}} L_{\mathfrak{y}}^* + \text{h.c.}) , \\ V_1 &= \sum_{\mathfrak{x}} (|L_{\mathfrak{x}}|^2 - 1) . \end{aligned}$$

The target space for  $L$  is the fundamental domain inside the triangle depicted above. The functional measure is not the product of Lebesgue measures but the product of reduced Haar measures on the lattice sites.

In the following we consider the two-coupling model

$$S_{\text{eff}} = (\lambda_{10} - \lambda_{21}) \sum (L_{\mathbf{x}} L_{\mathbf{y}}^* + \text{h.c.}) + \lambda_{21} \sum (L_{\mathbf{x}}^2 L_{\mathbf{y}} + L_{\mathbf{y}}^2 L_{\mathbf{x}} + \text{h.c.}) \quad (15)$$

which contains the leading order contribution in the strong coupling expansion. For vanishing  $\lambda_{21}$  it reduces to the Polonyi model [13].

## 4 Gluodynamics and Potts-Model

There is a direct relation between the effective Polyakov loop dynamics and the 3-state Potts model: If we freeze the Polyakov loops to the center of the group,

$$\mathcal{P}_{\mathbf{x}} \longrightarrow z_{\mathbf{x}} \mathbb{1} \in \text{center}(SU(3)) \iff \theta_{\mathbf{x}} \in \left\{ 0, \frac{2\pi}{3}, \frac{4\pi}{3} \right\} \quad (16)$$

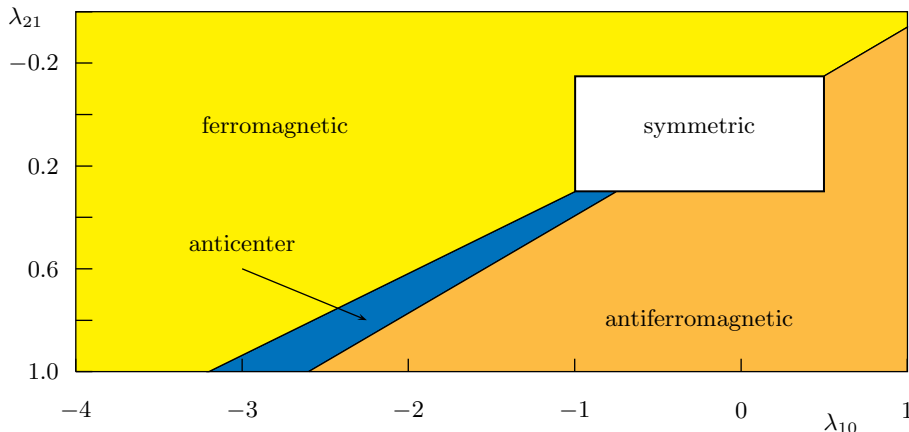
then the effective action (15) reduces to the Potts-Hamiltonian (1) with  $J = 18(\lambda_{10} + 4\lambda_{21})$ . The same reduction happens for all center-symmetric effective actions with nearest neighbor interactions. Only the relation between the couplings  $\lambda_{pq}$  and  $J$  is modified.

For the gauge group  $SU(2)$  the finite temperature phase transition is second order and the critical exponents agree with those of the 2-state Potts spin model which is just the ubiquitous Ising model. The following numbers are due to Engels et.al [10]

	$\beta/\nu$	$\gamma/\nu$	$\nu$
4d $SU(2)$	0.525	1.944	0.630
3d Ising	0.518	1.970	0.629

and support the celebrated Svetitsky-Yaffe conjecture [2]<sup>1</sup>. For the gauge group  $SU(3)$  the finite temperature phase transition is first order and we cannot compare critical exponents. But the effective theory (15) shows a second order transition from the symmetric to a anti-ferromagnetic phase and we can compare critical exponents at this transition with those of the same transition in the 3-state Potts spin model.

In a first step we study the 'classical phases' of the Polyakov loop model with action (15). The classical analysis, where one minimizes the 'classical action'  $S_{\text{eff}}$ , shows a ferromagnetic, anti-ferromagnetic and anticenter phase. The classical phase diagram is depicted below.



For small couplings the quantum fluctuations will disorder the system and entropy will dominate energy. Thus we expect a symmetric phase near the origin in the  $(\lambda_{10}, \lambda_{21})$ -plane and such a phase was inserted by hand in the diagram. There exists one unexpected phase which cannot exist for Potts spin models. It

<sup>1</sup>For the relations between 3-dimensional gauge theories at the deconfining point and 2-dimensional Potts-models, the so-called gauge-CFT correspondence, I refer to the recent paper [11].

is an ordered phase for which the order parameter is near to the points opposite to the center elements, hence we call it anticenter phase. They are marked in the fundamental domain on page 4. We shall see that the classical analysis yields the qualitatively correct phase diagram.

## 4.1 Modified Mean Field Approximation

In a second step we calculate the effective potential for the Polyakov loop model with action (15) in the mean field approximation. Here we are not concerned with the relevance of this model for finite temperature gluodynamics and just consider (15) as the classical action of a field theoretical extension of the Potts spin models. We use the variational characterization (5) for the effective action where we must minimize with respect to probability measures on the space of field configuration  $\{\mathcal{P}_{\mathbf{x}}|\mathbf{x} \in \Lambda\}$  with fixed expectation values  $\langle \chi_{pq} \rangle$  of all characters  $\chi_{pq}(\mathcal{P}_{\mathbf{x}})$  showing up in the Polyakov loop action. As outlined in section 2, in the mean field approximation we assume the measures to have product form,

$$\mathcal{DP} \longrightarrow \prod_{\mathbf{x}} d\mu_{\text{red}}(\mathcal{P}_{\mathbf{x}}) p_{\mathbf{x}}(\mathcal{P}_{\mathbf{x}}). \quad (17)$$

For further details the reader is referred to our earlier paper [12]. Here  $\mu_{\text{red}}$  is the reduced Haar measure of  $SU(3)$ . Since we expect an anti-ferromagnetic phase we only assume translational invariance on the sublattices in the decomposition (8). This way one arrives at a non-trivial variational problem on two sites.

We illustrate the procedure with the simple Polyakov loop model studied by Polonyi [13],

$$S_{\text{eff}} = \lambda S_{10} = \lambda \sum (L_{\mathbf{x}} L_{\mathbf{y}}^* + \text{h.c.}). \quad (18)$$

To enforce the two constraints  $\langle L_{\mathbf{x}} \rangle = L_i$  for  $\mathbf{x} \in \Lambda_i$  one introduces two Lagrangean multipliers. For the minimal model (18) one arrives at the following mean field effective potential

$$2u_{\text{mf}}(L_1, L_1^*, L_2, L_2^*) = -d\lambda |L_1 - L_2|^2 + \sum v_{\text{mf}}(L_i, L_i^*) \quad (19)$$

$$\text{with } v_{\text{mf}}(L, L^*) = d\lambda |L|^2 + \gamma_0(L, L^*) \quad (20)$$

Here  $\gamma_0$  is the Legendre transform of

$$w_0(j, j^*) = \log z_0(j, j^*), \quad z_0(j, j^*) = \int d\mu_{\text{red}} \exp(jL + j^*L^*). \quad (21)$$

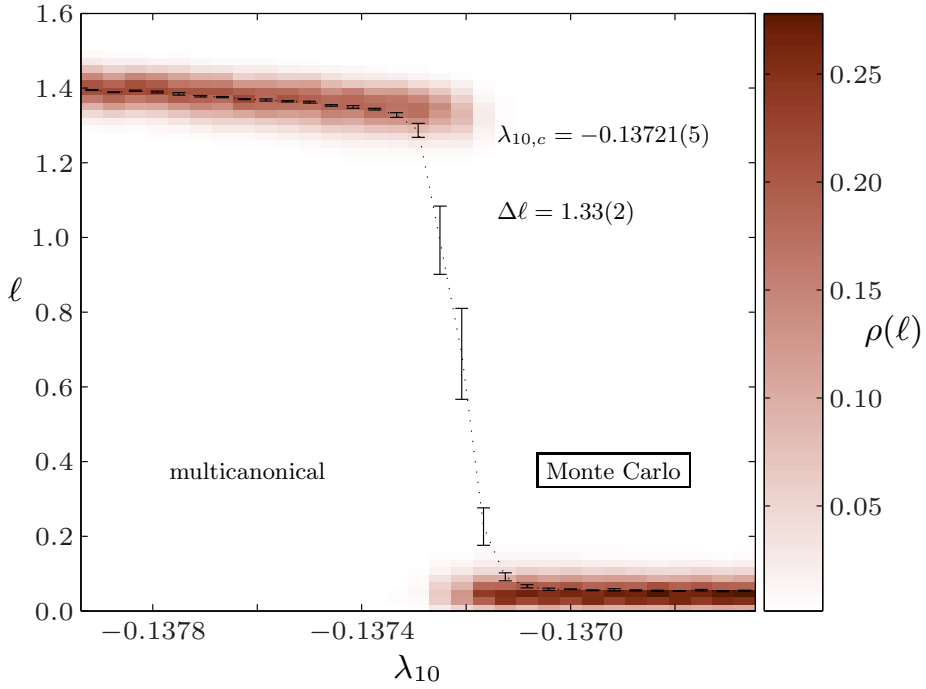
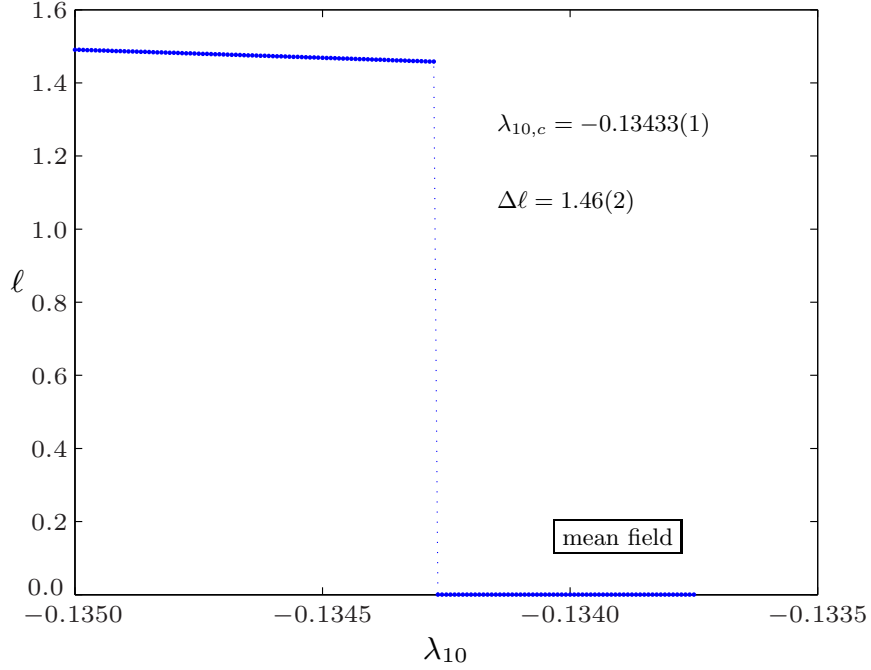
The last integral has an expansion in terms of modified Bessel functions [14, 15],

$$z_0(j, j^*) = \sum_{n \in \mathbb{Z}} e^{inN\alpha} \det \begin{pmatrix} I_n & I_{n+1} & I_{n+2} \\ I_{n-1} & I_n & I_{n-1} \\ I_{n-2} & I_{n-1} & I_n \end{pmatrix} (2|j|), \quad j = |j|e^{i\alpha}. \quad (22)$$

As order parameters discriminating the symmetric, ferromagnetic and anti-ferromagnetic phases we take [16]

$$L = \frac{1}{2}(L_1 + L_2), \quad M = \frac{1}{2}(L_1 - L_2), \quad \ell = |L|, \quad m = |M|. \quad (23)$$

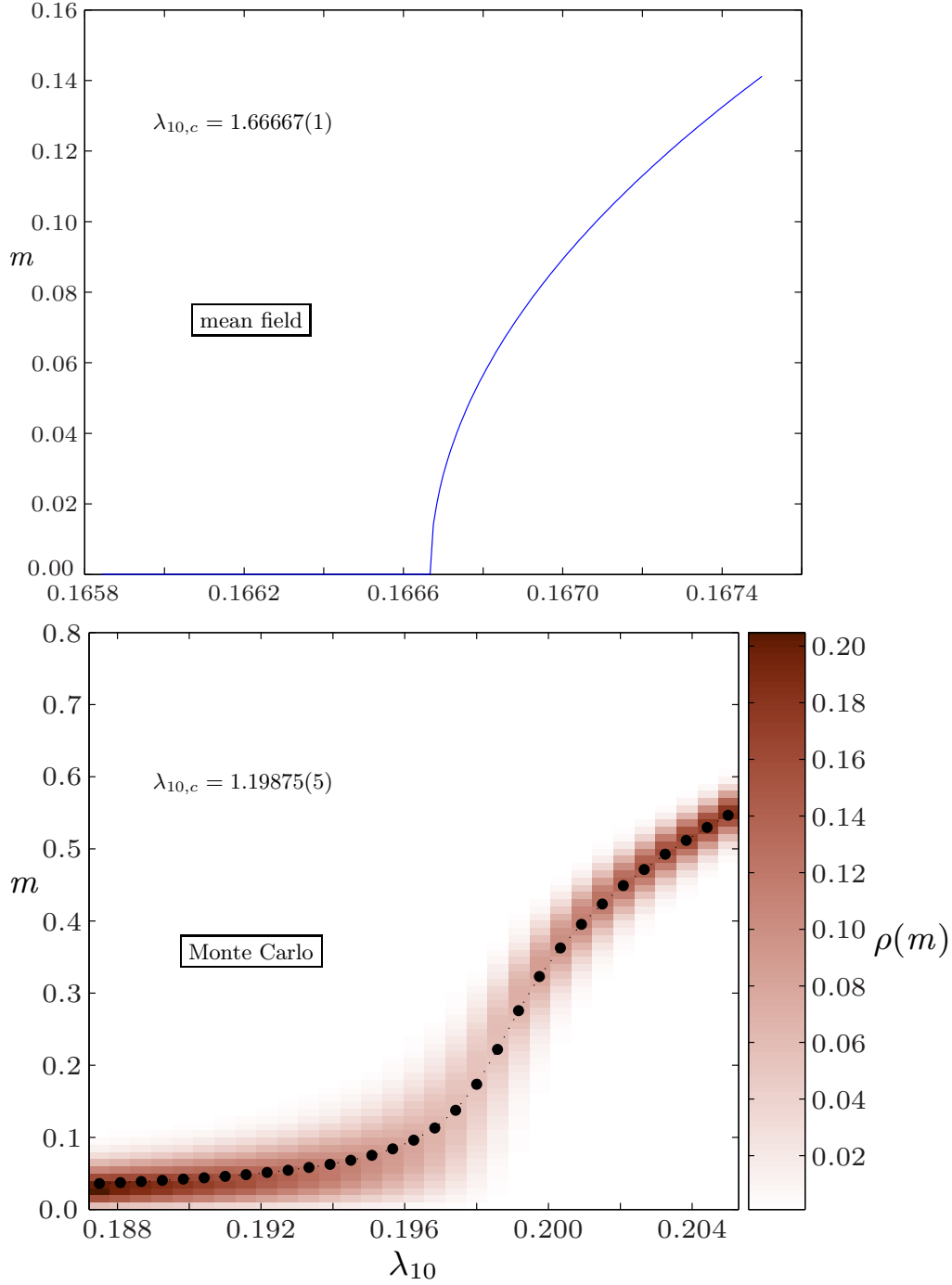
The following two figures show the value of the order parameter  $\ell$  as function of the coupling  $\lambda_{10}$  near the phase transition point from the symmetric to the ferromagnetic phase. The value of the critical coupling and the jump  $\Delta\ell$  of the order parameter in the mean field approximation and simulations agree astonishingly well.



In the second figure the order parameter  $\ell$  for the ferromagnetic phase is plotted against its probability distribution given by the area shaded in grey. In the vicinity of the first order transition we used a multicanonical algorithm on a  $16^3$  lattice to calculate the critical coupling to very high precision. For further details on algorithmic aspects I refer to our recent paper [1].

Both the classical and mean field analysis show, that the model should have a second order transition from the symmetric to the antiferromagnetic phase. To study this transition we calculated the order parameter  $m$  in (23) in the modified mean field approximation and with Monte Carlo simulations. The

order parameter  $m$  is sensitive to the transition in question.



Again the expectation value and probability distribution of  $m$  near the transition is plotted. To get a clear signal we have chosen a large lattice with  $28^3$  sites and evaluated  $5 \times 10^5$  sweeps. The mean field approximation and Monte-Carlo simulations both show that the transition to the anti-ferromagnetic phase is second order

With the cumulant method we have calculated the critical exponents  $\gamma$  and  $\nu$  and compared our results with the same exponents for the 3-state Potts model at the second order transition from the symmetric to the anti-ferromagnetic phase [16]. Within error bars the critical exponents are the same.



exponent	3-state Potts	minimal $S_{\text{eff}}$
$\nu$	0.664(4)	0.68(2)
$\gamma/\nu$	1.973(9)	1.96(2)

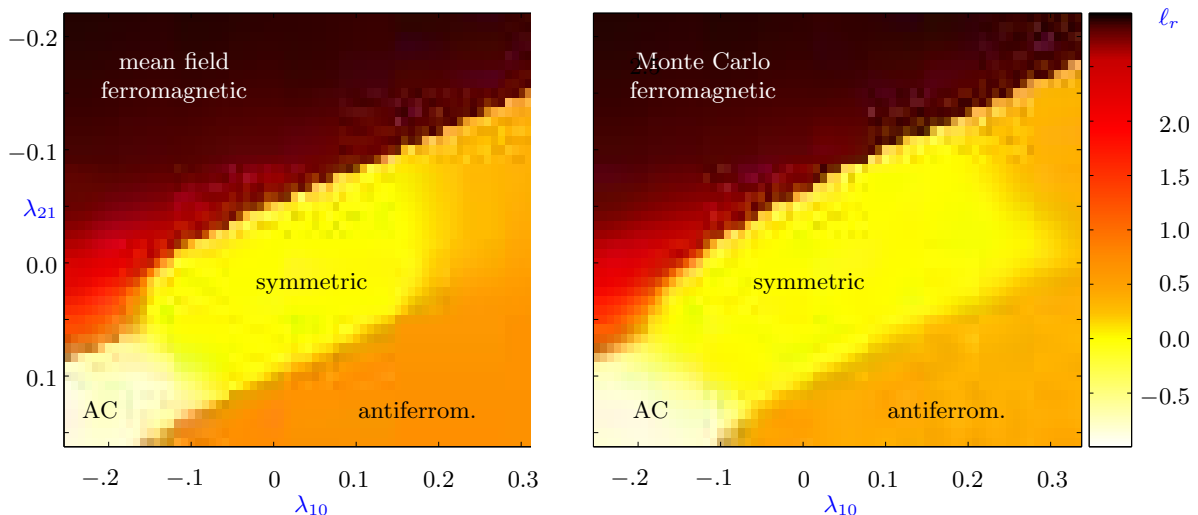
This is how the conjecture relating finite temperature gluodynamics with spin models is at work: The Polyakov loop dynamics is effectively described by generalized Potts models with the fundamental domain as target space, for  $SU(3)$  it is the triangularly shaped region on page 3. The first order transition of gluodynamics is modelled by the transition from the symmetric to the ferromagnetic phase in the generalized Potts models. These generalized Potts models are in the same universality class as the ordinary Potts spin models; they have the same critical exponents at the 'unphysical' second order transition from the symmetric to the anti-ferromagnetic phase.

It is astonishing how good the mean field approximation is. The reason is probably, that the upper critical dimension of the (generalized) 3-state Potts model is 3 and not 4 as one might expect. This is explained by the fact, that the models are embedded in systems with tricritical points, see below, and for such systems the upper critical dimension is reduced [17].

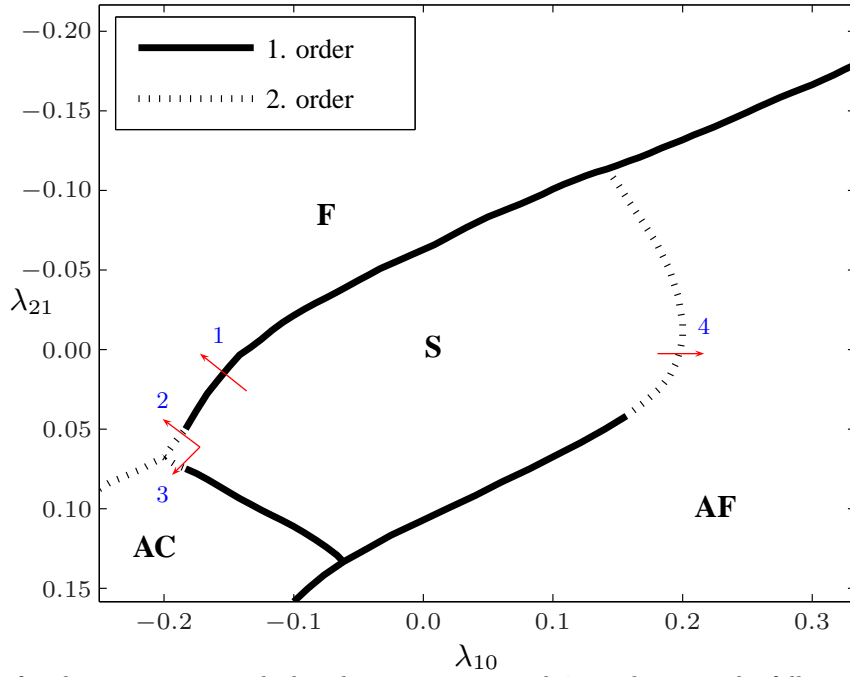
## 5 Simulating the Effective Theories

We have undertaken an extensive and expensive scan to calculate histograms in the coupling constant plane  $(\lambda_{10}, \lambda_{21})$  of the model (15). Away from the transition lines we used a standard Metropolis algorithm giving results within 5 percent accuracy. Near first order transitions we simulated with a multicanonical algorithm on lattices with up to  $20^3$  lattice sites. Most demanding have been the simulations near second order transitions. For that we developed a new *cluster algorithm* which improved the auto-correlation times by two orders of magnitude on larger lattices. We found a rich phase structure with 4 different phases with second and first order transitions and tricritical points. As for the minimal model the Monte Carlo simulations are in good and sometimes very good agreement with the mean field analysis.

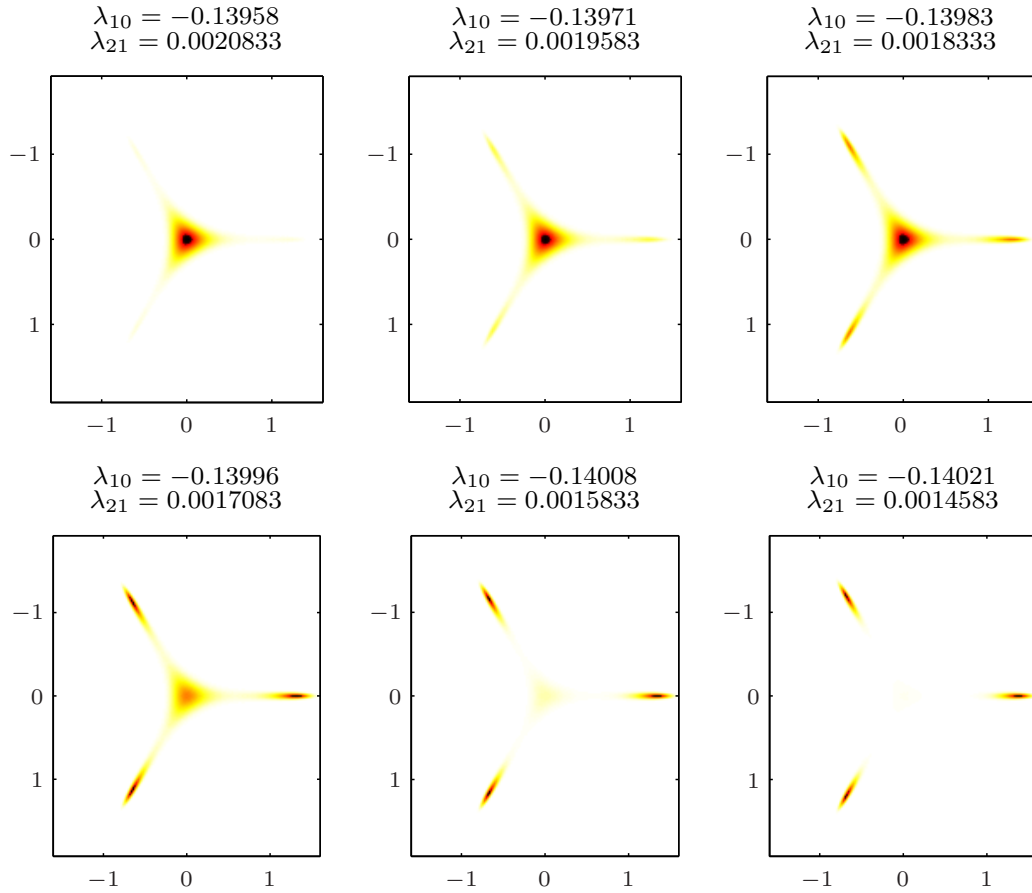
The following two figures show the phase structure in the generalized MF approximations and the corresponding results of our extended MC simulations.



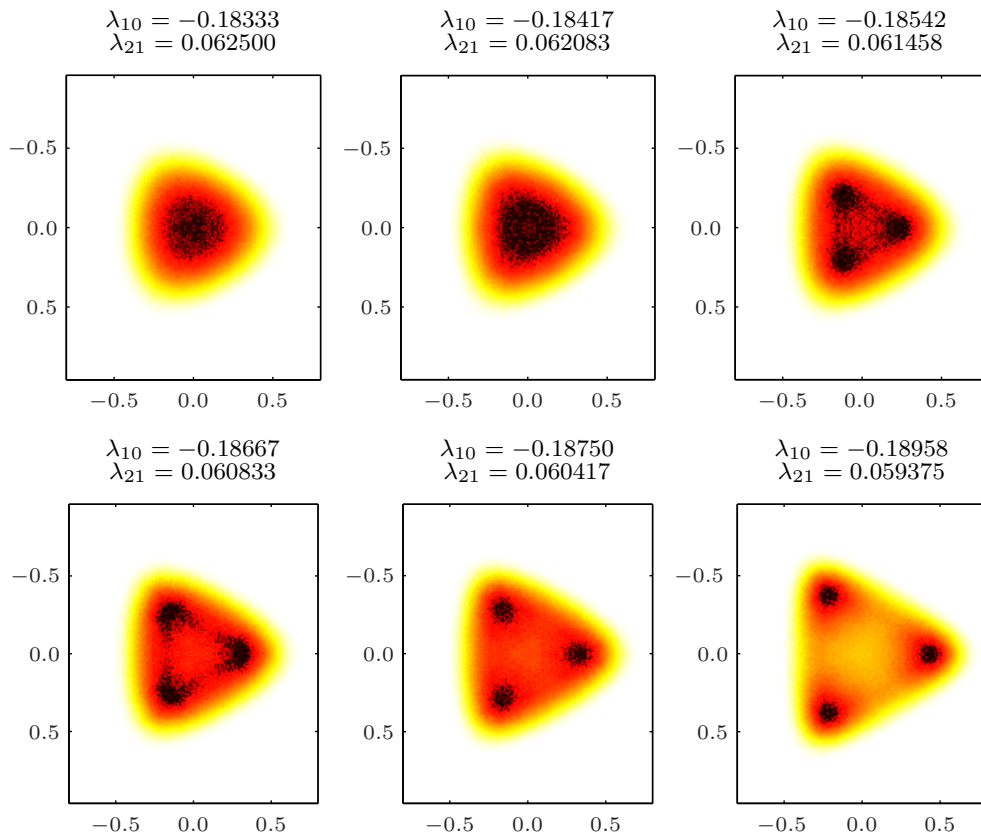
The results of the simulations are summarized in the following phase portrait, in which we have indicated the order of the various transitions. The calculations were done on our Linux cluster with the powerful jenLaTT package. In 3000 CPU hours we calculated 8000 histograms in coupling constant space.



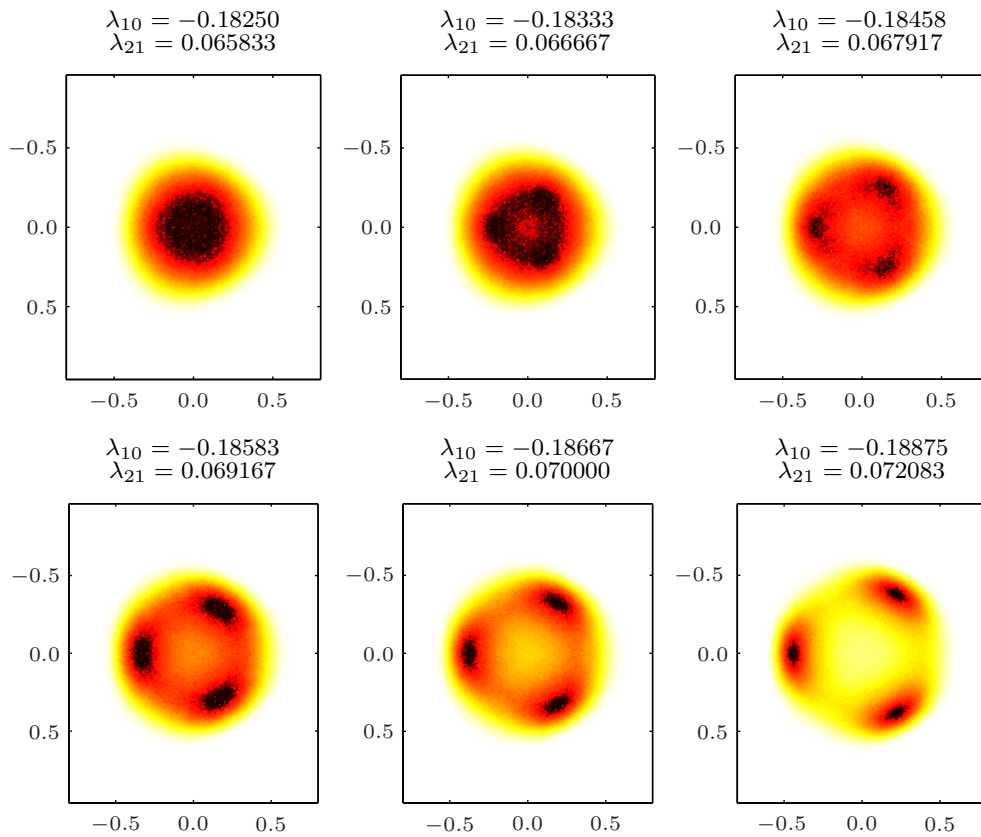
Histograms for the transitions marked with arrows 1, 2, 3 and 4 are shown in the following figures. For each transition 6 histograms are displayed. The first 6 histograms for  $L$  belong to the first order transition from the symmetric to the ferromagnetic phase marked with arrow 1 in the phase portrait.



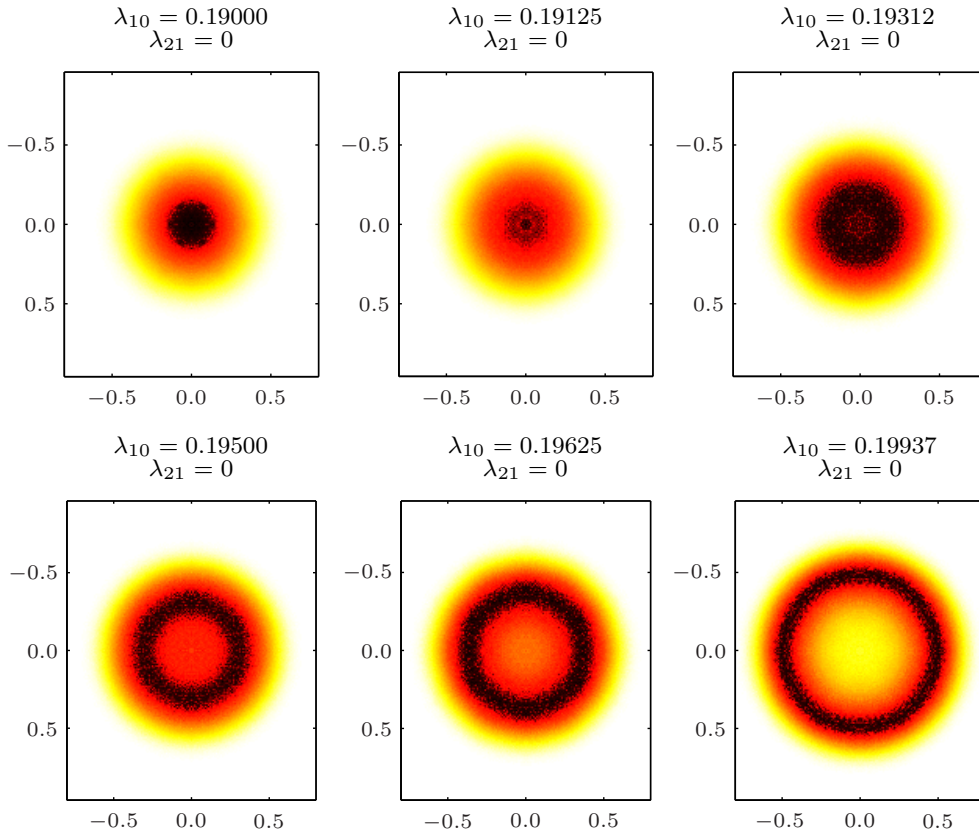
The following 6 histograms for  $L$  belong to the second order transition from the symmetric to the ferromagnetic phase, marked with arrow 2 in the phase portrait.



The next 6 histograms for  $L$  belong to the second order transition from the symmetric to the anti-center phase marked with arrow 3 in the phase portrait.



The last 6 histogram for  $M$  belong to the second order transition from the symmetric to the anti-ferromagnetic phase marked with arrow 4 in the phase portrait.



These histograms (and many others, see [1]) have been used to localize the phase transition lines and to investigate the nature of the transitions. The results are summarized in the phase portrait on page 10. The critical exponents  $\nu$  and  $\gamma$  given above have been determined at the second order transition indicated with arrow 4 in the portrait.

## 6 Conclusion

The strong coupling expansion results in a character expansion for the Polyakov-loop dynamics. The leading terms are center symmetric nearest neighbor interactions containing the characters of the smallest representations of the gauge group. We have performed an extensive modified mean field analysis which includes anti-ferromagnetic states without translational invariance on the whole lattice. A new and efficient cluster algorithm has been developed and applied to study the second order transitions from the symmetric to the anti-ferromagnetic phase. The autocorrelation times were improved by 2 orders of magnitude. We discovered an unexpectedly rich phase structure of the simple 2-coupling Polyakov loop model (15). This model is in the same universality class as the 3-state Potts spin model. The mean field results are surprisingly accurate which seems to indicate that the upper critical dimension of the generalized Potts models is 3. This is attributed to the existence of tricritical points [17].

To relate our results to gluodynamics we must calculate the couplings  $\lambda_{pq}$  in the Polyakov-loop dynamics as functions of the Wilson coupling  $\beta$  in gluodynamics. We have done this successfully for  $SU(2)$  gauge theory with inverse Monte Carlo techniques [12, 18] and plan to publish our results for  $SU(3)$  very soon [19]. For the inverse Monte Carlo simulations to work one needs simple geometric Schwinger Dyson equations for the Polyakov loop dynamics. Such equations have been derived very recently in [15]. It would be interesting to see whether the anti-ferromagnetic phase of the Polyakov loop

models plays any role at all for gluodynamics. In the present paper it was needed to show that certain critical exponents of the Polyakov loop models are the same as of the  $q = 3$  Potts spin model. Finally one would like to include heavy fermions in the effective Polyakov-loop dynamics. To that end one needs to add center symmetry breaking terms to the effective actions studied in the present paper. This will lead to a proliferation of additional terms in the effective action which renders a systematic study more difficult as compared to pure gluodynamics.

**Acknowledgements:** Andreas Wipf would like to thank the local organizing committee of the *O’Raifeartaigh Symposium on Non-Perturbative and Symmetry Methods in Field Theory* for organizing such a stimulating and pleasant meeting on the hills of Budapest to commemorate Lochlainn O’Raifeartaigh and his important contributions to physics. This contribution is very much in the tradition of his research on the role of symmetries and effective potentials in field theory.

## References

- [1] C. Wozar, T. Kaestner, A. Wipf, T. Heinzl and B. Pozsgay, Phase Structure of  $\mathbb{Z}_3$ -Polyakov-Loop Models, hep-lat/0605012, to appear in *Phys. Rev. D*.
- [2] L.G. Yaffe and B. Svetitsky, First Order Phase Transition in the SU(3) Gauge Theory at Finite Temperature, *Phys. Rev. D* 26, (1982), 963.
- [3] J Ashkin and E. Teller, Statistics of Two-Dimensional Lattices with four Components, *Phys. Rev.* 64, (1942) 178; R.B. Potts, Some Generalized Order-Disorder Transformations, *Proc. Camb. Phil. Soc.*, 48 (1952) 106; F.Y. Wu, The Potts model, *Rev. Mod. Phys.* 54 (1982) 235.
- [4] C. Yamaguchi and Y. Okabe, Three-Dimensional Antiferromagnetic q-State Potts Models: Application of the Wang-Landau Algorithm, *J. Phys. A: Math. Gen.* 34 (2001) 8781.
- [5] A. B. Harris, O. G. Mouritsen and A. J. Berlinsky, Pinwheel and Herringbone Structures of Planar Rotors with Anisotropic Interactions on a Triangular Lattice with Vacancies, *Can. J. Phys.* 62 (1984) (915); also see G. Roepstorff, *Path Integral Approach to Quantum Physics*, Springer, 1994.
- [6] L. O’Raifeartaigh, A. Wipf and H. Yoneyama, The Constraint Effective Potential, *Nucl. Phys.* B271 (1986) 653;
- [7] Y. Fujimoto, H. Yoneyama and A. Wipf, Symmetry Restoration of Scalar Models at Finite Temperature, *Phys. Rev. D* 38 (1988) 2625.
- [8] K. Holland and U.-J. Wiese, *At the Frontier of Particle Physics — Handbook of QCD*, M. Shifman, ed., World Scientific, Singapore, 2001, hep-ph/0011193.
- [9] G. Buss, *Analytische Aspekte effektiver SU(N)-Gittereichtheorien*, diploma thesis, Jena, (2004).
- [10] J. Engels, S. Mashkevich, T. Scheideler and G. Zinovjev, Critical Behaviour of SU(2) Lattice Gauge Theory. A Complete Analysis with the  $\chi^2$ -Method, *Phys. Rev. B* 365 (1996) 219.
- [11] F. Gliozzi and S. Necco, Critical Exponents for Higher-Representation Sources in 3d SU(3) Gauge Theory from CFT, hep-th/0605285.
- [12] T. Heinzl, T. Kaestner and A. Wipf, Effective Actions for the SU(2) Confinement–Deconfinement Phase Transition, *Phys. Rev. D* 72 (2005) 065005.
- [13] J. Polonyi and K. Szlachanyi, Phase Transition from Strong Coupling Expansion, *Phys. Lett.* B110, (1982) 395.
- [14] J. Carlsson and B. McKellar, SU(N) Glueball Masses in 2+1 Dimensions, *Phys. Rev. D* 68 (2003) 074502.
- [15] R. Meinel, S. Uhlmann and A. Wipf, Ward Identities for Invariant Group Integrals, to appear.
- [16] J.S. Wang, R.H. Swendsen and R. Kotecky, Three-state Antiferromagnetic Potts Models: A Monte Carlo Study, *Phys. Rev. B* 42 (1990) 2465.
- [17] I. Lawrie and S. Sarbach, in: *Phase Transitions and Critical Phenomena*, Vol. 9, edited by C. Domb and J. Lebowitz, pages 2-155, Academic Press 1984; D. Landau and R. Swendsen, Monte Carlo Renormalization-Group Study of Tricritical Behavior in Two Dimensions *Phys. Rev. B* 33 (1986) 7700.
- [18] L. Dittmann, T. Heinzl and A. Wipf, An Effective Lattice Theory for Polyakov Loops, *JHEP* 0406 (2004) 005.
- [19] T. Heinzl, T. Kaestner, A. Wipf and C. Wozar, in preparation.